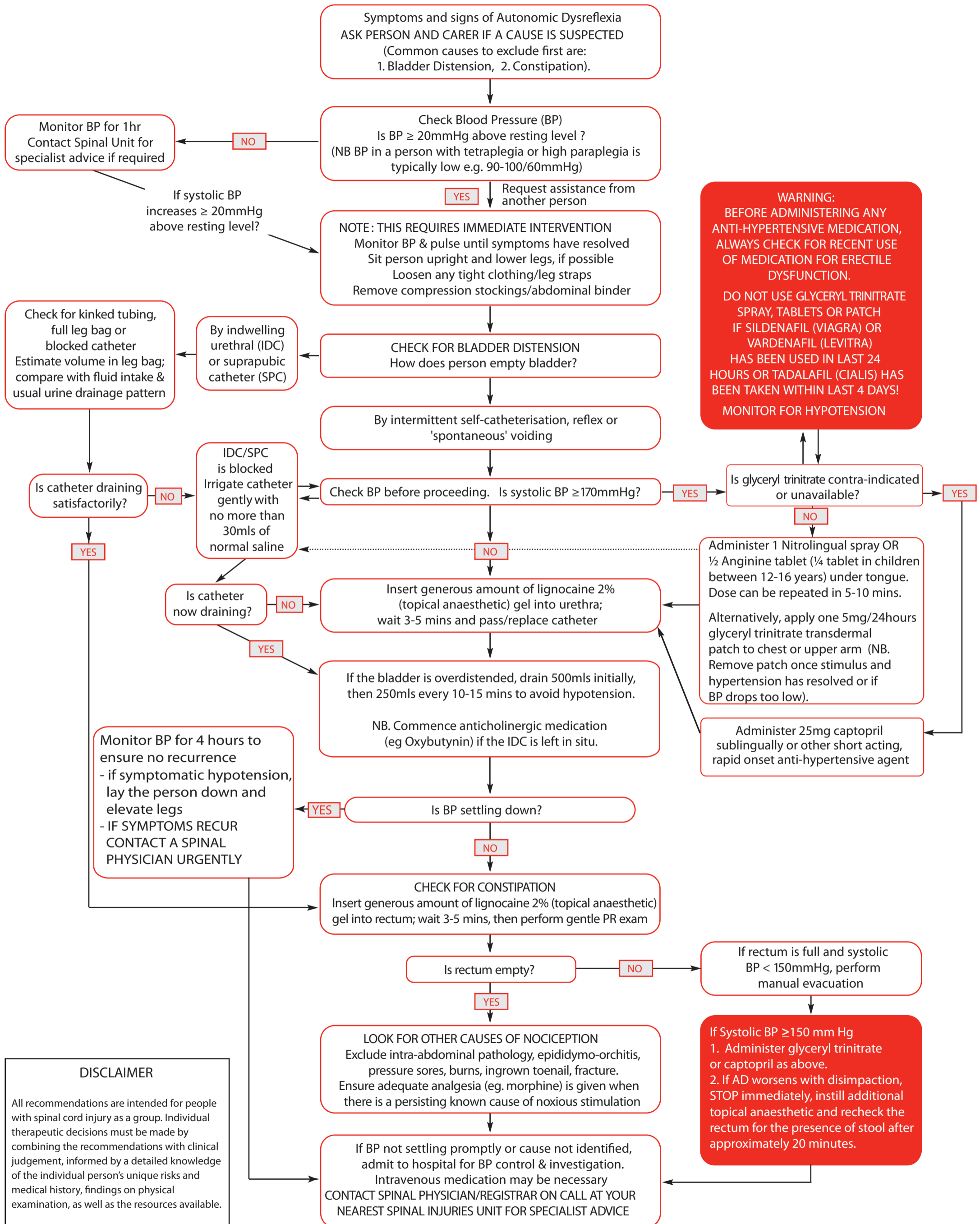


# Treatment Algorithm for Autonomic Dysreflexia (Hypertensive Crisis) In Spinal Cord Injury



**WARNING:**  
BEFORE ADMINISTERING ANY ANTI-HYPERTENSIVE MEDICATION, ALWAYS CHECK FOR RECENT USE OF MEDICATION FOR ERECTILE DYSFUNCTION.  
DO NOT USE GLYCERYL TRINITRATE SPRAY, TABLETS OR PATCH IF SILDENAFIL (VIAGRA) OR VARDENAFIL (LEVITRA) HAS BEEN USED IN LAST 24 HOURS OR TADALAFIL (CIALIS) HAS BEEN TAKEN WITHIN LAST 4 DAYS!  
MONITOR FOR HYPOTENSION

**DISCLAIMER**  
All recommendations are intended for people with spinal cord injury as a group. Individual therapeutic decisions must be made by combining the recommendations with clinical judgement, informed by a detailed knowledge of the individual person's unique risks and medical history, findings on physical examination, as well as the resources available.  
This revised algorithm was re-endorsed for use by the Australian and New Zealand Spinal Cord Society (ANZSCOS) in September 2010.  
This project was funded by the Motor Accidents Authority of NSW.